

R5 Desview
www.desview.com

**5.5" Full HD Touch Screen
3D-LUT on-camera Monitor**



Full Touch Screen



Lut Import



HDR



1xHDMI 1.4



Full-Waveform

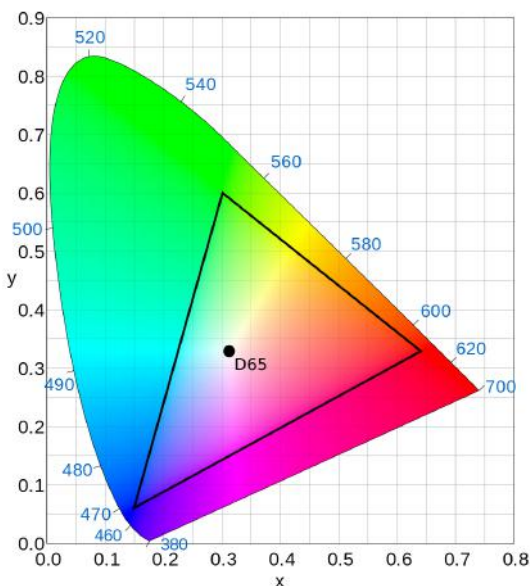


Pinch to Zoom



Anamorphic mode

School color



Monitoring Features

- | | | | | | |
|--------------------|---------------|----------------------|----------------|---------------|-------------------|
| | | | | | |
| False Color | Single Color | Brightness Histogram | RGB Histogram | Vector scope | RGB Waveform |
| | | | | | |
| Luminance Waveform | Full Waveform | Peaking Filter | Zebra | HDR | LUT |
| | | | | | |
| Mark Ratio | Center Mark | Safe area | Pixel to Pixel | HV delay | Color Temperature |
| | | | | | |
| Audio Meter | Image Flip | Battery Notification | Grid Lines | Display Ratio | Zoom-in |

Video interface



Supports HDMI input and output and up to 4096x2160p@24Hz.

Input: HDMI x1

Output: HDMI x1

Audio: 3.5mm Headphone Jack

Battery Info



E6

NP-F

The monitor supports NP-F550、NP-F750、 NP-F970 and E6 Batteries.

DC IN: 7-24V

DC OUT: 8V

Import Lut files



SD card slot

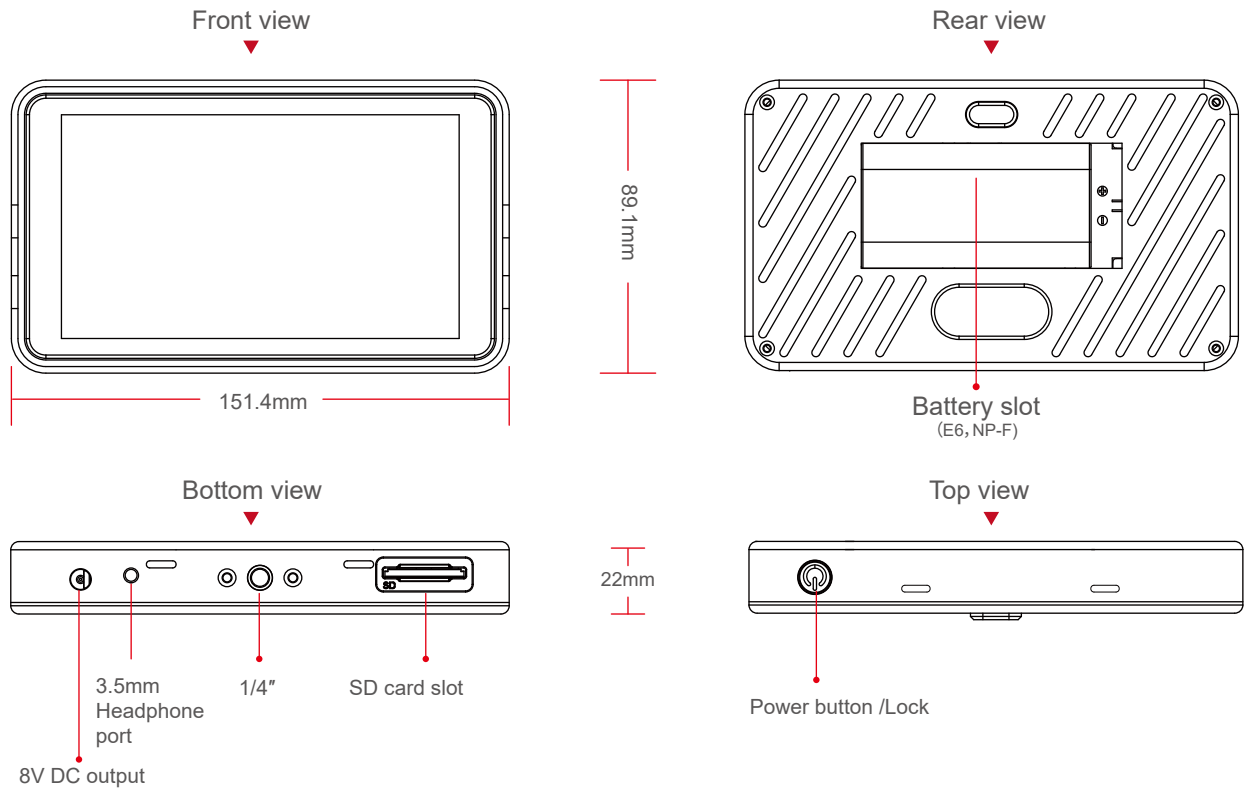
Custom 3D-LUT via SD card

Monitor software upgrade









Specification

Screen Size	5.5 inch
Resolution	1920*1080
Display Area	120.96(W) ×68.04(H)mm
Display Colors	16.7M
Dot Pitch	0.021×0.063 (H×V)
Brightness	450nits
Contrast Ratio	1000:1
Aspect Ratio	16:9
Backlight	LED
Visual Angle	178°(89°/89°L/R) 178°(89°/89°U/D)
Input	HDMI/SD
Output	HDMI
Audio	3.5mm Headphone Jack
HDMI Signal Format	720x480i&720x480p@59.94, 60Hz 720x576i&720x576p@50Hz 1280x720p@50, 59.94, 60Hz 1920x1080i@50, 59.94, 60Hz 1920x1080psf@24, 25, 29.97, 30Hz 1920x1080p@23.93, 24, 25, 29.97,30,50,59.94,60Hz 3840x2160p@24,25,30Hz 4096x2160p@24Hz
Power Dissipation	≤9W
Input Voltage	DC7-24V
Operating Temperature	-20 ℃~55 ℃
Storage Temperature	-30 ℃~65 ℃
Unit Size	182x120x85mm
Unit weight	583g
Body weight	200g

Structure Size



Standard Accessories

			
Sun hood	Snail hot shoe mount	Mini HDMI cable	Micro HDMI cable
			
D-Tap cable	SD card	Microfiber cloth	Instruction manual



Shenzhen Bestview Electronic Co., Ltd

Address: No.5F, Building24, Longbi Industry Area, Bantian Town, Longgang District, Shenzhen 518129, China

Tel: +86 0755-28447130

Mail: sales@bestview.cc

Web: www.desview.com

@desviewglobal

